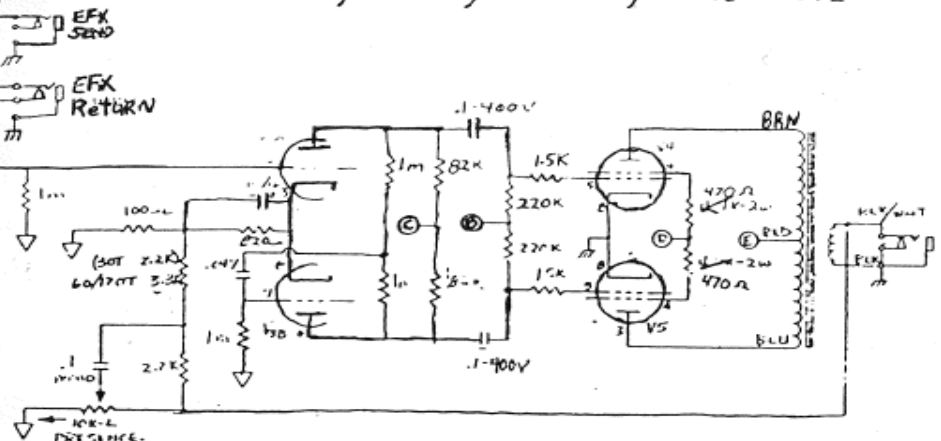
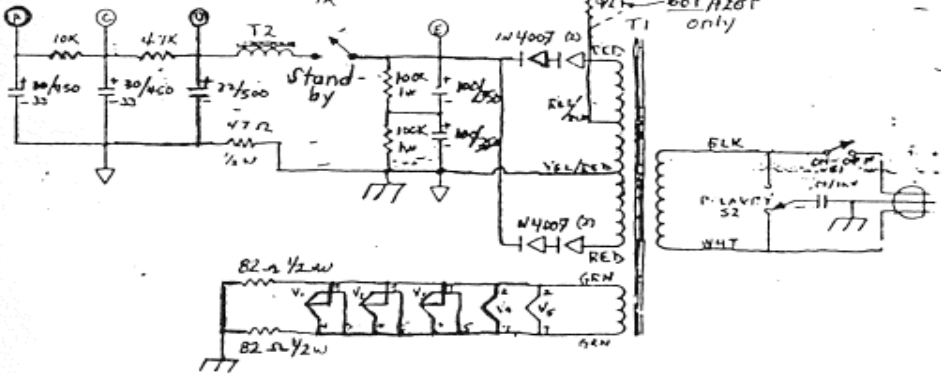
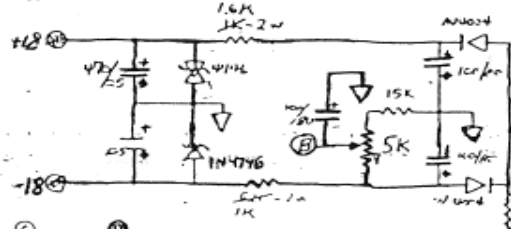


30-T, 60-T, 120-T, 212-T CH2



OUTPUT: 7.5V RMS VOLTAGES



ALL LEAD CHANNELS ARE IDENTICAL - 30-T, 60-T, 120-T, 212-T

SERIAL NUMBER: (30-T, 60-T, 120-T, 212-T)  
 SPECTRA THERM CH 1 & 2 PRE  
 DESIGNED BY: JLF  
 DATE: 7-14-83

